

ULTRAMAX™ MIMO 5-in-1

High Performance External Antenna for GETAC Video

ULTRAMAX MIMO 5-in-1 is our fully rugged outdoor antenna designed for GETAC Video equipped with five ports, designed specifically to provide high performance connectivity for Fleet and Public Safety vehicles. This antenna offers up to two high gain cellular/LTE/MIMO antennas, which include support for LTE Band 14 for FirstNet, two high gain Wi-Fi antennas, and a GNSS antenna inside a single robust and compact housing.

- 2 x Wideband Cellular/LTE Elements (MIMO)
- 2 x 2.4 & 4.9-6GHz Wi-Fi Elements (MIMO)
- 1 x GNSS Element
- Five embedded antenna technologies that operate over multiple bands in one housing
- Leading LTE performance while in coexistence with multiple other embedded antenna technologies
- Lower profile and smaller footprint than competing solutions
- High gain provides bigger cellular footprint
- Must be mounted on metal
- Available in black or white
- US Patent 10109918

Descriptions/Applications

The ULTRAMAX MIMO antenna builds on the best in class RF performance, leading design features, and extended operational life of our highly successful Fleet and Public Safety Antenna products. Like all our antennas, this product has been designed to be robust to withstand the natural hazards a vehicle faces including vibration, hot, cold, ice, salt, dirt, car washes, and tree branch sweeps. Our antennas typically outlast the life of a vehicle.



Optimal MIMO Performance for LTE



Compact and Robust UV Resistant Housing



Full Outdoor Installation Ready



Customizable Cables and Connectors to Connect to Any Modem



Flexible Mounting Options



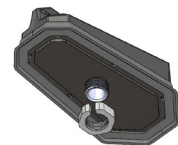
GNSS



Low loss cable accessories



Fast custom turnaround time



Bolt Mount

Standard Configurations

AP-GVS-CCWWG-Q-BL-15

MIMO Cell/LTE x 2, Wi-Fi x 2, & GNSS, Threaded Bolt Mount, SMA on Cell/LTE & GNSS, RP-SMA on Wi-Fi, Black, 15ft coax

Electrical Data			
Frequency Range	Elements 1 & 2	698-960/1700-2700 MHz	
	Elements 3 & 4	2.4/4.9-6.0 GHz	
	Element 5	1550~1610 MHz	
Operational Bands	Elements 1 & 2	LTE/Cellular	
	Elements 3 & 4	Wi-Fi	
	Element 5	GPS L1/GALILEO E1/GLONASS G1/BeiDou B1/QZSS L1	
Peak Gain: Isotropic	Elements 1 & 2	698-960 MHz	4.9 dBi
		1710-2700 MHz	7 dBi
	Elements 3 & 4	2.4 GHz, 5.5 GHz	7 dBi, 5 dBi
	Element 5	30.50 dBi	
Isolation	Elements 1 & 2	> 10 dB	
	Elements 3 & 4	> 30 dB	
Correlation Co-efficient	Elements 1 & 2	< 0.1	

Environmental Data	
Hazardous Substances	RoHS Compliant
Temperature	-40°C to 65°C (-40°F to + 149°F) Operating and Storage conformance to IEC 60068
Humidity (Non-Condensing)	5% to 96% Operating and Storage conformance to IEC 60068
Military Spec	MIL-STD 810 conformance to vibration

Mounting Data		
Dimensions	Height	2.220" (56.4mm)
	Width	3.831" (97.3mm)
	Length	7.000" (178.3mm)
Color	Black (BL) or White (WH)	

Cable Data- Cell/LTE		Cable Data- Wi-Fi		Cable Data- GNSS	
Type	CFD195 Low Loss	Type	CFD195 Low Loss	Type	RG-174U
Diameter	0.195" (4.953 mm)	Diameter	0.195" (4.953 mm)	Diameter	0.100" (2.54 mm)
Length	1 feet (0.3 m)	Length	1 feet (0.3 m)	Length	1 feet (0.3 m)
Termination	SMA Male	Termination	RP-SMA Male	Termination	SMA Male

GNSS Data - Ceramic Patch Antenna Specification		GNSS Data - LNA Specification	
Bandwidth	1561 – 1602 MHz	Noise Figure	1.2 dB
Gain@Zenith	2.5 dBi	Gain	28 dBi
Polarization	R.H.C.P.	Voltage	3.3V~5.6V
Axial Ratio	3.0 dB Typ.	Current	9.6±1mA@3.3V