

ULTRAMAX™ MIMO

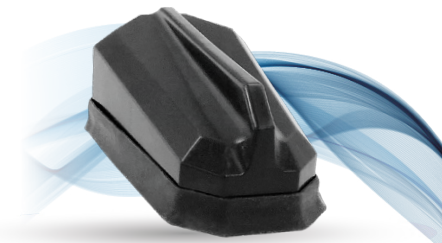
Up to 7-in-1 High Performance External Antenna

ULTRAMAX MIMO is a full outdoor antenna designed specifically to provide high performance connectivity for Fleet and Public Safety vehicles and assets connecting to almost any vehicular router or modem. This antenna is configurable and offers up to two high gain cellular/LTE/MIMO antennas, which include support for LTE Band 14 for FirstNet, four high gain Wi-Fi antennas, and a GNSS antenna inside a single robust and compact housing. This antenna provides the ultimate in Wi-Fi support - with integrated 4x4 Wi-Fi antennas, providing support for full HD streaming video and other high bandwidth applications.

- 2 x Wideband Cellular/LTE Elements (MIMO)
- 4 x 2.4 & 4.9-6GHz Wi-Fi Elements (MIMO)
- 1 x GNSS Element
- Seven or less embedded antenna technologies that operate over multiple bands in one housing
- Leading LTE performance while in coexistence with multiple other embedded antenna technologies
- Lower profile and smaller footprint than competing solutions
- High gain provides bigger cellular footprint
- Must be mounted on metal
- Available in black or white
- US Patent 10109918

Descriptions/Applications

The ULTRAMAX MIMO antenna builds on the best in class RF performance, leading design features, and extended operational life of our highly successful Fleet and Public Safety Antenna products. Like all our antennas, this product has been designed to be robust to withstand the natural hazards a vehicle faces including vibration, hot, cold, ice, salt, dirt, car washes, and tree branch sweeps. Our antennas typically outlast the life of a vehicle.



Optimal MIMO Performance for LTE



Compact and Robust UV Resistant Housing



Full Outdoor Installation Ready



Customizable Cables and Connectors to Connect to Any Modem



Flexible Mounting Options



GNSS



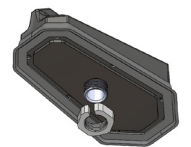
Low loss cable accessories



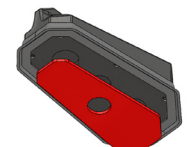
Fast custom turnaround time

Standard Configurations

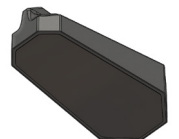
AP-CCWWWG-Q-S222222-RP3456-BL-15	MIMO Cell/LTE x 2, Wi-Fi x 4 & GNSS, Threaded Bolt Mount, SMA on Cell/LTE & GNSS, RP-SMA on Wi-Fi, Black, 15ft coax
AP-CCWWWG-A-S222222-RP345-BL-15	MIMO Cell/LTE x 2, Wi-Fi x 3 & GNSS, Adhesive Mount, SMA on Cell/LTE & GNSS, RP-SMA on Wi-Fi, Black, 15ft coax
AP-CCWWG-M-S22222-RP34-BL-15	MIMO Cell/LTE x 2, Wi-Fi x 2 & GNSS, Magnetic Mount, SMA on Cell/LTE & GNSS, RP-SMA on Wi-Fi, Black, 15ft coax
AP-CCWG-A-S2222-RP3-BL-15	MIMO Cell/LTE x 2, Wi-Fi & GNSS, Adhesive Mount, SMA on Cell/LTE & GNSS, RP-SMA on Wi-Fi, Black, 15ft coax
AP-CCW-Q-S222-RP3-BL-15	MIMO Cell/LTE x 2 & Wi-Fi, Threaded Bolt Mount, SMA on Cell/LTE, RP-SMA on Wi-Fi, Black, 15ft coax
AP-CCG-M-S222-BL-15	MIMO Cell/LTE x 2 & GNSS, Magnetic Mount, SMA on Cell/LTE & GNSS, Black, 15ft coax
AP-CC-Q-S22-BL-15	MIMO Cell/LTE x 2, Threaded Bolt Mount, SMA on Cell/LTE, Black, 15ft coax
AP-WWWWG-Q-S22222-RP1234-BL-15	Wi-Fi x 4 & GNSS, Threaded Bolt Mount, RP-SMA on Wi-Fi, SMA on GNSS, Black, 15ft coax
AP-WWWG-A-S2222-RP123-BL-15	Wi-Fi x 3 & GNSS, Adhesive Mount, RP-SMA on Wi-Fi, SMA on GNSS, Black, 15ft coax
AP-WWG-M-S222-RP12-BL-15	Wi-Fi x 2 & GNSS, Magnetic Mount, RP-SMA on Wi-Fi, SMA on GNSS, Black, 15ft coax
AP-WW-Q-S22-RP12-BL-15	Wi-Fi x 2, Threaded Bolt Mount, RP-SMA, Black, 15ft coax
AP-WWW-A-S222-RP123-BL-15	Wi-Fi x 3, Adhesive Mount, RP-SMA, Black, 15ft coax
AP-WWWW-M-S2222-RP1234-BL-15	Wi-Fi x 4, Magnetic Mount, RP-SMA, Black, 15ft coax



Bolt Mount



Adhesive Mount



Magnetic Mount

Also available in color white, customizable cable lengths up to 35 feet, and other connector variations.

Electrical Data

Frequency Range	Elements 1 & 2	698-960/1700-2700 MHz		
	Elements 3, 4, 5 & 6	2.4/4.9-6.0 GHz		
	Element 7	1550~1610 MHz		
Operational Bands	Elements 1 & 2	LTE/Cellular		
	Elements 3, 4, 5 & 6	Wi-Fi		
	Element 7	GPS L1/GALILEO E1/GLONASS G1/BeiDou B1/QZSS L1		
Peak Gain: Isotropic	Elements 1 & 2	698-960 MHz	4.9 dBi	
		1710-2700 MHz	7 dBi	
	Elements 3, 4, 5 & 6	2.4 GHz, 5.5 GHz		7 dBi, 5 dBi
		Element 7	2.50 dBi	28 dB
Isolation	Elements 1 & 2	> 10 dB		
	Elements 3, 4, 5 & 6	> 30 dB		
Correlation Co-efficient	Elements 1 & 2	< 0.1		

Environmental Data

Hazardous Substances	RoHS Compliant
Temperature	-40°C to 65°C (-40°F to + 149°F) Operating and Storage conformance to IEC 60068
Humidity (Non-Condensing)	5% to 96% Operating and Storage conformance to IEC 60068
Military Spec	MIL-STD 810 conformance to vibration

Mounting Data

Dimensions	Height	2.220" (56.4mm)
	Width	3.831" (97.3mm)
	Length	7.000" (178.3mm)
Color	Black (BL) or White (WH)	

Cable Data- Cell/LTE

Type	CFD195 Low Loss
Diameter	0.195" (4.953 mm)
Length	1 feet (0.3 m)
Termination	SMA Male

Cable Data- Wi-Fi

Type	CFD195 Low Loss
Diameter	0.195" (4.953 mm)
Length	1 feet (0.3 m)
Termination	RP-SMA Male

Cable Data- GNSS

Type	RG-174U
Diameter	0.100" (2.54 mm)
Length	1 feet (0.3 m)
Termination	SMA Male

GNSS Data - Ceramic Patch Antenna Specification

Bandwidth	1561 – 1602 MHz
Gain@Zenith	2.5 dBi
Polarization	R.H.C.P.
Axial Ratio	3.0 dB Typ.

GNSS Data - LNA Specification

Noise Figure	1.2 dB
Gain	28 dBi
Voltage	3.3V~5.6V
Current	9.6±1mA@3.3V