

# ULTRAMAX™

## Single Cell LTE, Wi-Fi and GNSS Antenna designed for GETAC

ULTRAMAX is our fully rugged outdoor antenna designed specifically for GETAC laptops and tablets connecting to the triple pass docking station. This antenna offers a combination of a high gain cellular/LTE antenna which includes LTE Band 14 support for FirstNet, a high gain Wi-Fi antenna and a GNSS antenna inside a single robust and compact housing.

- 1 x Wideband Cellular/LTE Element
- 1 x 2.4 & 4.9-6 GHz Wi-Fi Element
- 1 x GNSS Element
- Three embedded antenna technologies that operate over multiple bands in one housing
- These antennas have the cables coming out “off center” from the bottom of the housing
- Lower profile and smaller footprint than competing solutions
- USA factory ensures fast turnaround customizations
- High gain provides bigger cellular footprint
- Must be mounted on metal
- Available in black or white
- US Patent 10109918



Compact and Robust UV Resistant Housing



Customizable Cables and Connectors to Connect to Any Modem



Full Outdoor Installation Ready



Fast custom turnaround time



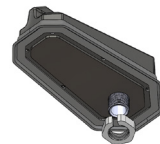
Flexible Mounting Options



Low loss cable accessories



GNSS



Bolt Mount

### Descriptions/Applications

The ULTRAMAX antenna builds on the best in class RF performance, leading design features, and extended operational life of our highly successful Fleet and Public Safety Antenna products. Like all our antennas, this product has been designed to be robust to withstand the natural hazards a vehicle faces including vibration, hot, cold, ice, salt, dirt, car washes, and tree branch sweeps. Our antennas typically outlast the life of a vehicle.

### Standard Configurations

<b>AP-GTC-CWG-Q-BL-19</b>	Cell/LTE, Wi-Fi & GNSS, Threaded Bolt Mount, SMA on Cell/LTE, Wi-Fi & GNSS, Black, 19ft coax
<b>AP-GTC-CWG-Q-WH-19</b>	Cell/LTE, Wi-Fi & GNSS, Threaded Bolt Mount, SMA on Cell/LTE, Wi-Fi & GNSS, White, 19ft coax

**Electrical Data**

Frequency Range	Element 1	698-960/1700-2700 MHz	
	Element 2	2.4/4.9-6.0 GHz	
	Element 3	1550~1610 MHz	
Operational Bands	Element 1	LTE/Cellular	
	Element 2	Wi-Fi	
	Element 3	GPS L1/GALILEO E1/GLONASS G1/BeiDou B1/QZSS L1	
Peak Gain: Isotropic	Element 1	698-960 MHz	4.6 dBi
		1710-2700 MHz	6.5 dBi
	Element 2	2.4 GHz, 5.5 GHz	7 dBi, 5 dBi
	Element 3	30.50 dBi	

**Environmental Data**

Hazardous Substances	RoHS Compliant
Temperature	-40°C to 65°C (-40°F to + 149°F) Operating and Storage conformance to IEC 60068
Humidity (Non-Condensing)	5% to 96% Operating and Storage conformance to IEC 60068
Military Spec	MIL-STD 810 conformance to vibration

**Mounting Data**

Dimensions	Height	2.220" (56.4mm)
	Width	3.831" (97.3mm)
	Length	7.000" (178.3mm)
Color	Black (BL) or White (WH)	

**Cable Data- Cell/LTE**

Type	CFD195 Low Loss
Diameter	0.195" (4.953 mm)
Length	1 feet (0.3 m)
Termination	SMA Male

**Cable Data- Wi-Fi**

Type	CFD195 Low Loss
Diameter	0.195" (4.953 mm)
Length	1 feet (0.3 m)
Termination	RP-SMA Male

**Cable Data- GNSS**

Type	RG-174U
Diameter	0.100" (2.54 mm)
Length	1 feet (0.3 m)
Termination	SMA Male

**GNSS Data - Ceramic Patch Antenna Specification**

Bandwidth	1561 – 1602 MHz
Gain@Zenith	2.5 dBi
Polarization	R.H.C.P.
Axial Ratio	3.0 dB Typ.

**GNSS Data - LNA Specification**

Noise Figure	1.2 dB
Gain	28 dBi
Voltage	3.3V~5.6V
Current	9.6±1mA@3.3V