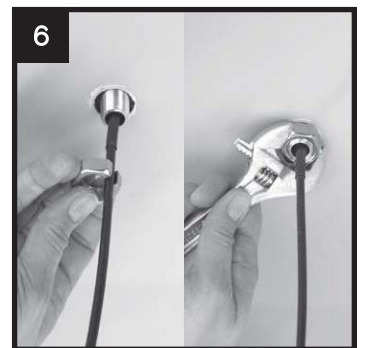
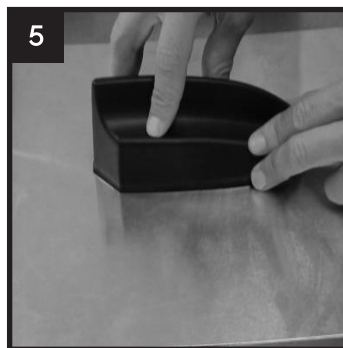
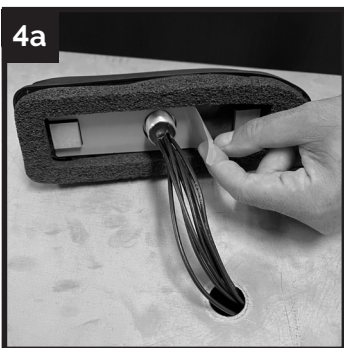
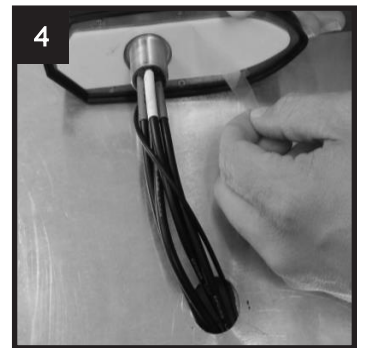
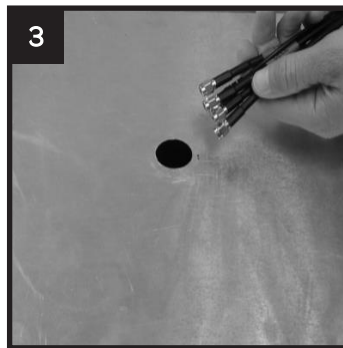
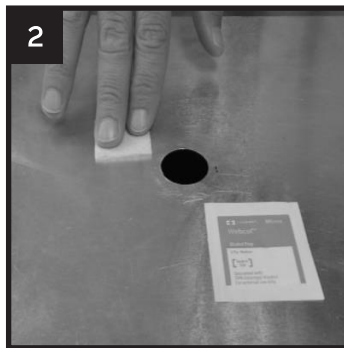


## Combined Adhesive & Bolt (Q) Mount Antenna Installation Guide

IMPORTANT! The surface temperature of the vehicle where the antenna will be mounted must be between 85°F to 100°F (30°C to 38°C).

\*\*\*WE HIGHLY RECOMMEND USING A HEAT GUN TO HEAT THE SURFACE AND A LASER TEMPERATURE READING GUN TO MEASURE THE SURFACE TEMPERATURE TO MAKE SURE IT IS HEATED PROPERLY.\*\*\*

1. Drill a 1" diameter hole where the center of the antenna will be located on the vehicle.
2. Clean the mounting surface with provided alcohol wipe to remove dust, dirt, and oil. Allow surface to dry.
3. Pass antenna cables through the hole.
4. Remove the backing on the bottom of the antenna exposing the adhesive pad.
  - a. Some antennas will have mounting foam around an inner adhesive pad.
  - b. This foam is cosmetic and will compress to any surface.
5. Position the antenna and adhere it to the vehicle using firm hand pressure.
6. Install the nut onto the threaded lug and tighten after contact to inside surface as follows:
  - One and a half turns for MULTIMAX™ 4G and 5G, and RECON13 (Not to exceed 20 ft-lbs).
  - Two turns for CENTURION™ 4G and 5G, ULTRAMAX™ B, and OPTOMX® (not to exceed 12 ft-lbs).



## Important Highlights and Key Points for Proper Antenna Installation

- The antenna Installer may encounter various obstacles with individual vehicle designs that may require different placement, routing of antenna cables or drilling of holes to complete the mounting procedure.
- Mount the antenna on the outside of the vehicle (roof or trunk).
- The antenna must be mounted on a metal surface to work correctly. If the surface is not metal, the antenna must be ordered with a built in metal ground plane.
- The antenna must be mounted horizontally - parallel to the ground (not mounted on a vertical surface).
- The antenna must be mounted to a flat, clean dry surface. Avoid mounting the antenna near panel seams and or rivets so the antenna gaskets can seal properly.
- The antennas should be installed with a minimum distance of 18 inches from existing antennas, light bars or obstacles protruding from the roof or trunk lid of the vehicle. If there is an antenna using the same frequency range, make sure it is mounted 20 or more inches away.
- When routing cables, DO NOT PULL ON CONNECTORS! Pulling directly on connectors will cause internal damage and loss of the signal at the radio receiver, GPS or modem. When routing cables, pull on the coaxial cable only.
- Tighten coax connections with an RF connector torque wrench to 3–5 in·lb for brass SMA and 7–10 in·lb for stainless SMA connectors, or alternatively finger tighten. For other coax connection types, please finger tighten. Any damage, loss, or cost of repair associated with installation other than as provided with these instructions would not covered by the limited warranty for this product.
- Make sure that the surface temperature where the antenna is to be mounted is between 85°F to 100°F (30°C to 38°C). Cooler surface temperatures will cause improper adhesion of the antenna to the surface.
- When installing an EZConnect™ Antenna, the cable harness will include extra pieces of heat shrink for covering the connectors if desired. It is recommended that these are heat shrunk only after all tests have been completed.

### Troubleshooting Check List:

- Is the antenna mounted on a horizontal, flat metal surface outside of the vehicle?
- Is the antenna at least 18 inches away from all other antennas or obstacles?
- Is the antenna attached snug/firm?
- Are the cables connected to the right ports on the docking station?
  - Cellular to Cellular (WWAN)- Blue Label, Wi-Fi to Wi-Fi WLAN- White Label, GPS to GPS
- Are the connectors tight and screwed on all the way?