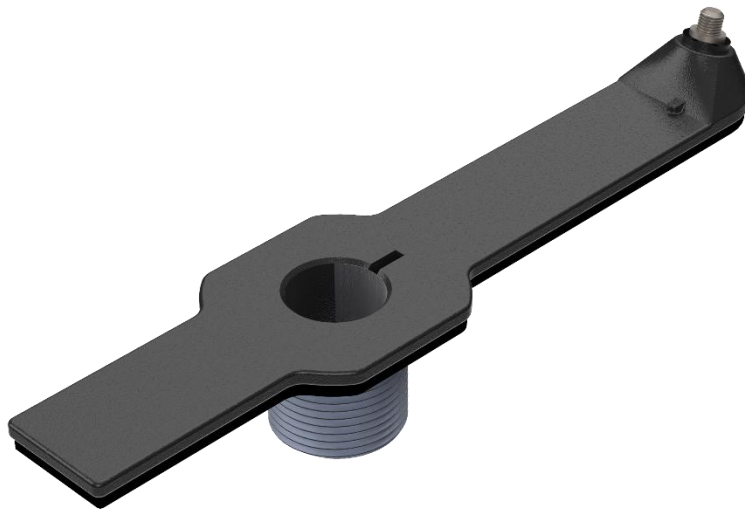




WHIP BASE ADAPTER

Installation Guide





Airgain, Inc. provides this documentation in support of its products for the internal use of its current and prospective customers. The publication of this document does not create any other right or license in any party to use and content in or referred to in this document and any modification or redistribution of this document is not permitted.

While efforts are made to ensure accuracy, typographical and other errors may exist in this document. Airgain, Inc reserves the right to modify or discontinue its products and to modify this and any other product documentation at any time.

All Airgain, Inc products are sold subject to its published Terms and Conditions, subject to any separate terms agreed with its customers. No warranty of any type is extended by publication of this documentation, including, but not limited to, implied warranties or merchantability, fitness for a particular purpose and non-infringement.

Copyright© 2025 All Rights Reserved. Registered Trademarks TM Airgain, Inc. Airgain, AirgainConnect, NimbeLink, and their associated logos are trademarks or registered trademarks of Airgain, Inc.



Table of Contents

1	PREREQUISITES	3
2	INSTALLATION.....	4
3	IMPORTANT HIGHLIGHTS AND KEY POINTS FOR PROPER INSTALLATION	5



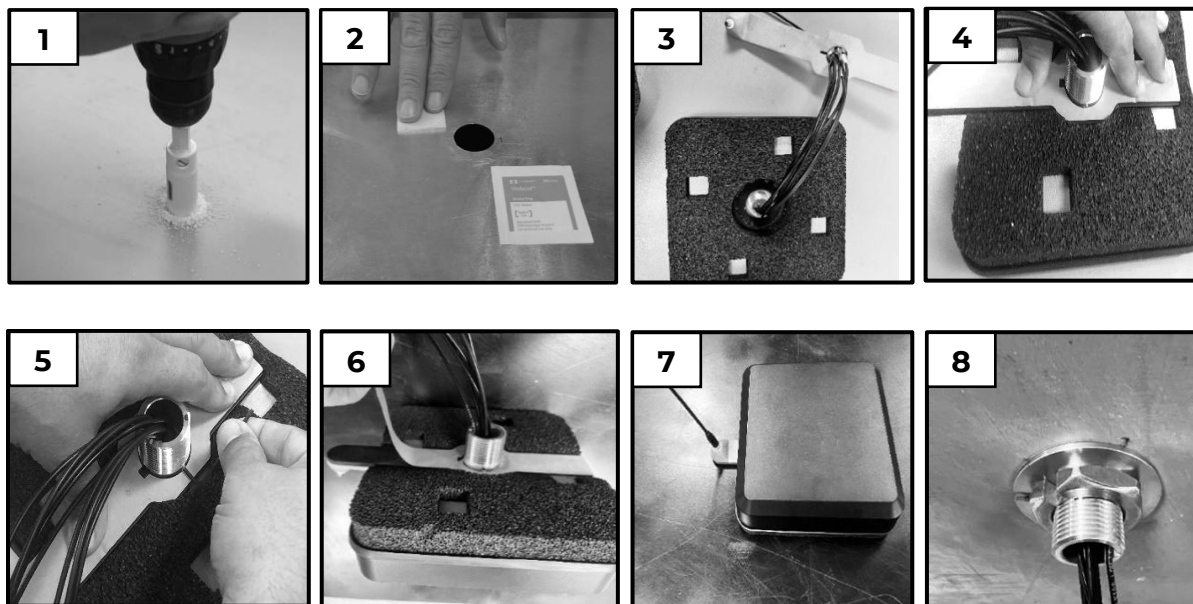
1 Prerequisites

IMPORTANT! The surface temperature of the vehicle where the whip base adapter will be mounted must be between 85°F to 100°F (30°C to 38°C). Cooler surface temperatures will cause improper adhesion of the whip base adapter to the surface.

*AIRGAIN HIGHLY RECOMMENDS USING A HEAT GUN TO HEAT THE SURFACE AND A LASER TEMPERATURE READING GUN TO MEASURE THE SURFACE TEMPERATURE TO MAKE SURE IT IS HEATED PROPERLY.

2 Installation

Follow the steps below to install the whip base adapter:



1. Drill a 1 $\frac{3}{8}$ " diameter hole where the center of the mating antenna will be mounted.
2. Clean the mounting surface with the provided alcohol wipe to remove dust, dirt, and oil. Allow the surface to dry.
3. Remove the paper liner from the adhesive pad on the bottom side of the mating antenna and route the mating antenna's cables through the opening in the whip base adapter.
4. Install the whip base adapter over the mating antenna's threaded bolt and **apply uniform downward pressure for at least 10 seconds** to adhere the mating antenna to the whip base adapter. The whip interface must be positioned towards the rear of the mating antenna.
5. **While continuing to apply uniform downward pressure**, use a 2mm hex wrench to tighten each set screw on the whip base adapter to 12 in-lbs or two turns after contact to inside surface.
6. Remove the paper liner from the adhesive foam pad on the bottom side of the whip base adapter and route the coax cables through the 1 $\frac{3}{8}$ " diameter hole that you drilled in Step 1.
7. Position the whip base adapter with the attached mating antenna on the mounting surface. Using both hands, press firmly down on the assembly until the adhesive foam pad contacts the mounting surface.
8. Install the slotted washer and nut over the assembly's threaded bolt and hand tighten the nut until the whip base adapter is firmly seated onto the vehicle's surface. Using an adjustable wrench tighten the nut an additional $\frac{1}{2}$ to $\frac{3}{4}$ turns.



3 Important Highlights and Key Points for Proper Installation

Be sure to read and understand the following to ensure proper installation:

- You may encounter various obstacles with individual vehicle designs that require different placement, routing of cables, or drilling of holes to complete the mounting procedure.
- Mount the whip base adapter on the outside of the vehicle (roof or trunk).
- Airgain recommends you mount the whip base adapter on a metal surface.
- Mount the whip base adapter horizontally – parallel to the ground (not mounted on a vertical surface).
- Mount the whip base adapter to a flat, clean and dry surface. Avoid mounting near panel seams and/or rivets so the adhesive foam pad can seal properly.
- Install the mating antenna a minimum distance of 18 inches from existing antennas, light bars, or obstacles protruding from the roof or trunk lid of the vehicle. If there is an antenna using the same frequency range, make sure it is mounted at least 20 inches away.
- When routing cables, DO NOT PULL ON THE CONNECTORS! Pulling directly on connectors causes internal damage and loss of the signal at the radio receiver, GPS, or modem. When routing cables, pull on the coaxial cable only.
- Tighten coax connections with an RF connector torque wrench to 3 to 5 in-lbs for brass SMA and 7 to 10 in-lbs for stainless SMA connectors, or alternatively finger tighten. For other coax connection types, finger tighten. Any damage, loss, or cost of repair associated with installation other than as provided with these instructions is not covered by the limited warranty for this product.
- The EZConnect™ cable harness will include extra pieces of heat shrink for covering the connectors if desired. Airgain recommends only applying the heat shrink after all tests have been completed.